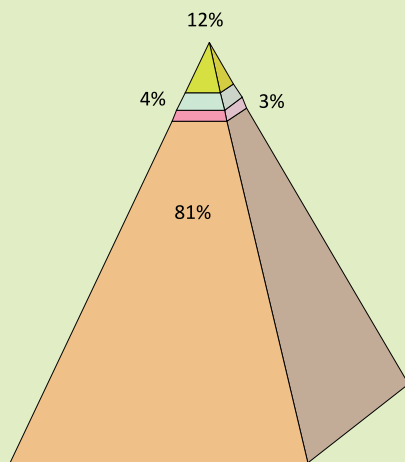


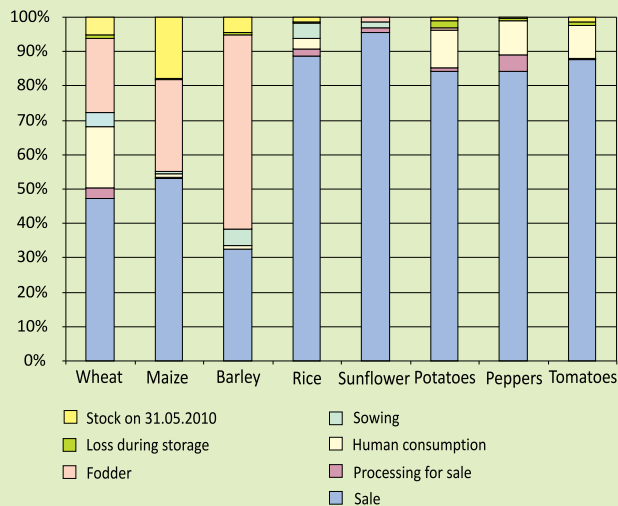
Structure of cultivated land, 2011



- Arable land and gardens
- Orchards
- Vineyards
- Meadows

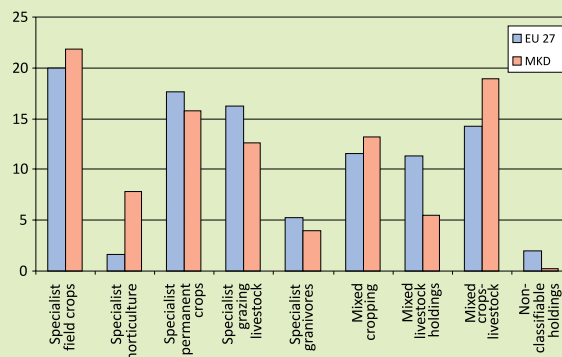
Source: Survey on crop production

Use of own production at individual agricultural holdings (01.06.2009 - 31.05.2010)



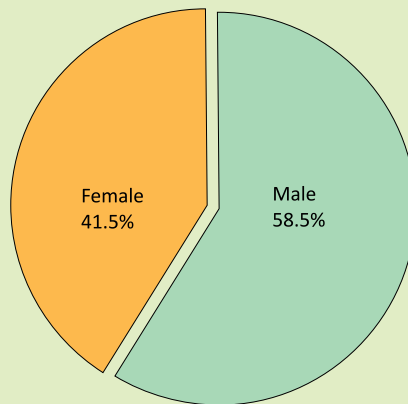
Source: Farm Structure Survey, 2010

Agricultural holdings by type of agricultural production, 2007



Source: SSO - Agricultural Census, 2007; Eurostat

Persons working on the individual agricultural holdings by gender

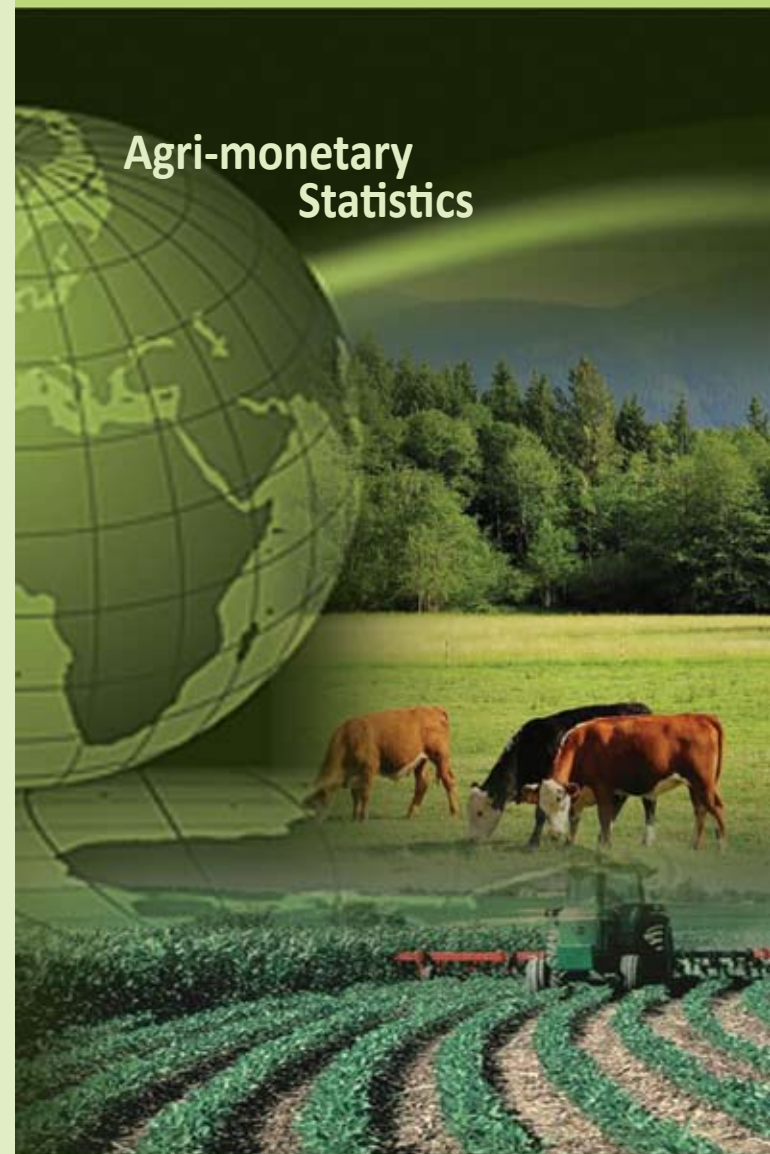


Source: Farm Structure Survey, 2010



Republic of Macedonia
State Statistical Office

Agri-monetary Statistics



State Statistical Office
Dame Gruev - 4, 1000 Skopje
Phone: ++389 2/3295 600
Fax: ++389 2/3111 336
e-mail: info@stat.gov.mk
www.stat.gov.mk



This leaflet has been produced with the financial assistance of the European Union. The contents of this leaflet are the sole responsibility of State Statistical Office and can under no circumstances be regarded as reflecting the position of the European Union.

Agricultural output is the total of the production of all agricultural units expressed in value of production. The value of each of the items is valued at producer prices, which are the prices that agricultural producers receive from the purchasers for a unit of produced goods.

Intermediate consumption consists of the value of goods and services used as inputs in the production process, excluding fixed assets whose consumption is recorded as fixed capital consumption. In addition, goods and services produced and consumed within the same agricultural unit are not recorded as intermediate consumption unless they also appear in the output of the industry.

Net value added is a balancing item of the production account in the Economic Accounts for Agriculture. It is a key item of measuring the productivity of the agriculture in the economy and it is calculated as a difference between the agricultural output on the one hand and total intermediate consumption and the consumption of fixed capital on the other hand.

Agricultural area refers to the total area used for agricultural production (cultivated land, pastures, reeds, ponds and fishponds).

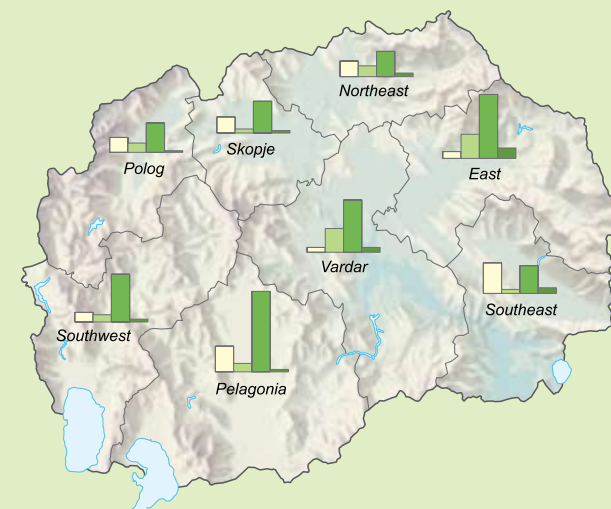
Cultivated land refers to land area under cultivation, used for growing field crops, perennial plants and grasses, and where harvesting and other agricultural activities are performed. Cultivated land consists of arable land and gardens, orchards, vineyards and meadows.

The type of farming of an agricultural holding is determined by the relative contribution of the standard output of the different characteristics of the holding to its total standard output.

Economic Accounts for Agriculture - Production Account

	at current prices				
	2006	2007	2008	2009	2010
Crop output	48 880	46 526	51 634	47 077	52 412
Animal output	14 455	16 289	23 199	17 943	17 927
Agricultural services output	176	263	266	201	375
Non-agricultural secondary activities	1 488	1 546	1 145	972	1 366
Subsidies on products	1 006	915	1 816	3 349	4 367
Output of the agricultural 'industry'	66 005	65 539	78 061	69 543	76 447
Total intermediate consumption	33 435	33 337	40 080	32 259	35 146
Gross value added at basic prices	32 569	32 202	37 981	37 283	41 300
Consumption of fixed capital	2 716	2 710	3 238	3 194	3 550
Net value added at basic prices	29 853	29 492	34 743	34 089	37 750

Total number of cattle, pigs, sheep and goats, 2011



Number of cattle, pigs, sheep and goats:

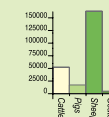
Republic of Macedonia

Total number of cattle, 2011: 265299

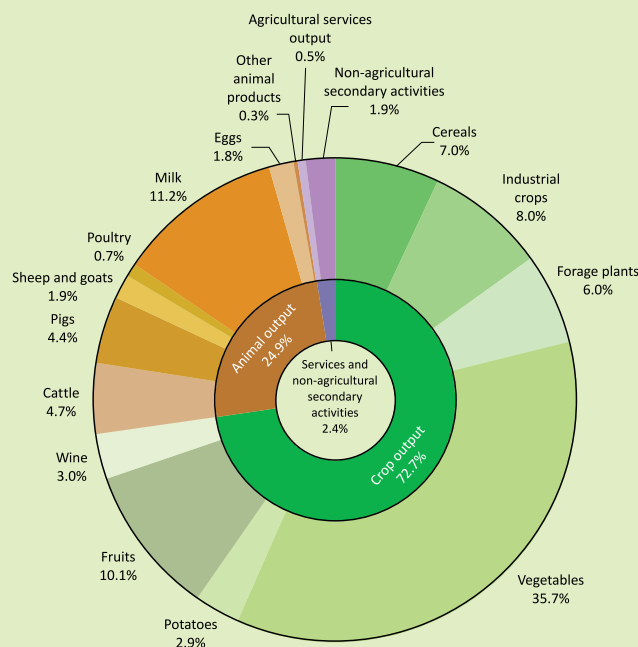
Total number of pigs, 2011: 196570

Total number of sheep, 2011: 766631

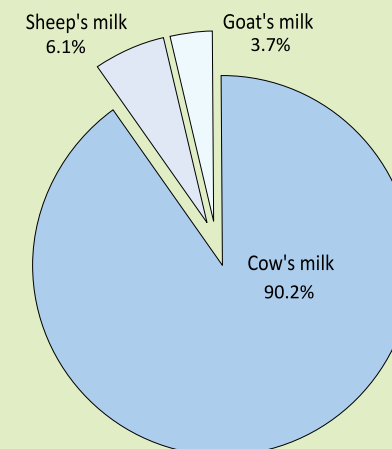
Total number of goats, 2011: 72778



Composition of the output value of the agricultural industry, 2010



Production of milk, 2011



Source: Livestock production, 2011